



Laboratory Brochure



Do More With OHAUS



Ingeniously Practical

Content

Precision and Analytical Balances

Explorer Semi-Micro	3
Explorer Analytical	4
Explorer Precision.....	5
Explorer High Capacity.....	6
Adventurer Analytical.....	7
Adventurer Precision.....	8
Pioneer Semi-Micro	9
Pioneer Analytical	10
Pioneer Precision	11

Moisture Analyzers

MB120.....	13
MB90	14
MB27	15

Portable Balances

Scout STX	17
Scout SPX	18

Centrifuges

Frontier 5000 Mini.....	20
Frontier 5000 Micro	21
Frontier 5000 Multi	22
Frontier 5000 MultiPro.....	23
Centrifuge Accessories	24

Open Air Shakers

Light Duty Orbital	26
Heavy Duty Orbital	27
Extreme Environment	28
Rocking & Waving	29
Reciprocating.....	30

Incubating & Incubating Cooling Shakers

Incubating Cooling Thermal Shakers.....	32
Incubating Light Duty Orbital Shakers.....	33
Incubating Cooling Orbital Shakers	34
Incubating Rocking & Waving Shakers.....	35
Accessories	36

Vortex Mixers

Mini Vortex Mixer	40
Heavy-Duty Vortex Mixer.....	41
Microplate Vortex Mixer.....	42
Multi-Tube Vortex Mixer.....	43
Accessories	44

Dry Block Heaters

Dry Block Heaters	47
2 Block with Heated Lid	48
Accessories	49

Hotplates and Stirrers

Mini Hot Plate	52
Mini Stirrer	52
Mini Hot Plate Stirrer	52

Bead Mill Homogenizers

HT Lysing Homogenizer.....	54
Accessories	55

Clamps and Supports

Multi-Purpose Clamps	57
Specialty Clamps	60
Connectors & Holders.....	65
Rods, Frames and Supports	68
Flow Control Clamps.....	74
Misc. Non-Electrical Products	76

Laboratory Instruments

Starter Bench Meters.....	78
Starter Portable Meters	79
Starter Pen Meters.....	80
Accessories	81

Explorer® Series Flagship Balances From OHAUS



- Semi-micro, analytical, precision and high-capacity models offer capacities up to 35kg, readabilities from 0.01mg to 0.1g
- Built tough for laboratory and industrial applications
- Exceptional weighing performance for applications requiring high accuracy and low repeatability
- Fully featured to handle advanced workflows and weighing applications

Adventurer® Series Capable and Affordable



- Well-equipped to handle routine weighing operations for a variety of applications
- Highly intuitive operation, easy to setup and use
- Excellent weighing performance and fast stabilization times provide fast, accurate measurements

Pioneer® Series

Combining Economy and Performance for Essential Weighing



- Competitive Performance at an Economical Price
- Provides exceptional value and are well suited for basic weighing applications
- Durably constructed to withstand longterm use in classroom, laboratory, and industrial environments

Explorer® Semi-Micro Ohaus' Most Sophisticated Balance

- Explorer Semi-micro balances provide all the features and value of OHAUS' flagship Explorer balances but are capable of weighing with a readability of 0.01 mg and capacities up to 220 g
- Semi-micro readability provides high accuracy and therefore small minimum weights and maximizes the operational range of the balance in regulated applications
- Achieves and maintains stability quickly and can be used in standard lab environments without the need for specialized equipment such as weighing tables



Model	AutoCal	Capacity	Readability	Item No
EX125	*	120 g	0.01 mg	30139511
EX125D	*	51 g ; 120 g	0.01 mg; 0.1 mg	30139510
EX225D	*	120 g ; 220 g	0.01 mg; 0.1 mg	30139512
EX225D/AD	*	120 g ; 220 g	0.01 mg; 0.1 mg	30139513
EX225/AD	*	220 g	0.01 mg	30139514

/AD = Equipped with motorized draftshield doors & built in static ionizer

Precision & Analytical Balances

Explorer® Analytical

Intelligent Performance No Matter How Difficult the Task

- Measurement traceability features facilitate compliance with GLP and GMP standards
- Standard RS-232, USB, and optional Ethernet interfaces allow for easy connectivity to printers or PCs. Explorer balances are easy to integrate into systems such as LIMS or tracking systems
- 14 specialized applications, including formulation, dynamic (animal) weighing, and pipette adjustment



Model	AutoCal	Capacity	Readability	Item No
EX124	*	120 g	0.1 mg	83021331
EX124/AD	*	120 g	0.1 mg	30061976
EX224	*	220 g	0.1 mg	83021332
EX224/AD	*	220 g	0.1 mg	30061977
EX324	*	320 g	0.1 mg	83021335
EX324/AD	*	320 g	0.1 mg	30061978

/AD = Equipped with motorized draftshield doors

Model	AutoCal	Capacity	Readability	Certified Readability	Class	Item No
EX124N/AD	*	120 g	0.1 mg	1 mg	I	30061997
EX224N	*	220 g	0.1 mg	1 mg	I	83021334
EX224N/AD	*	220 g	0.1 mg	1 mg	I	30061998
EX324N	*	320 g	0.1 mg	1 mg	I	83021337
EX324N/AD	*	320 g	0.1 mg	1 mg	I	30061999

/AD = Equipped with motorized draftshield doors

N = NTEP / Measurement Canada approved

Explorer® Precision

Intelligent Performance No Matter How Difficult the Task

- A modular design allows the terminal to be detached from the base and column- or rack mounted, perfect for fume hoods, vacuum boxes, or when weighing oversized objects
- Standard RS-232, USB, and optional Ethernet interfaces allow for easy connectivity to printers or PCs. Explorer balances are easy to integrate into systems such as LIMS or tracking systems
- A large color graphic touch screen and intuitive user interface, available in 14 operating languages



Model	AutoCal	Capacity	Readability	Item No
EX223/E		220 g	1 mg	30061979
EX223	*	220 g	1 mg	83021341
EX423/E		420 g	1 mg	30061980
EX423	*	420 g	1 mg	83021342
EX623	*	620 g	1 mg	83021348
EX1103	*	1100 g	1 mg	83021350
EX2202/E		2200 g	0.01 g	30061981
EX2202	*	2200 g	0.01 g	83021356
EX4202/E		4200 g	0.01 g	30061982
EX4202	*	4200 g	0.01 g	83021357
EX6202/E		6200 g	0.01 g	30061983
EX6202	*	6200 g	0.01 g	83021360
EX10202	*	10200 g	0.01 g	83021362
EX6201/E		6200 g	0.1 g	30061984
EX6201	*	6200 g	0.1 g	83021361
EX10201	*	10200 g	0.1 g	83021365

Model	AutoCal	Capacity	Readability	Certified Readability	Class	Item No
EX423N	*	420 g	1 mg	0.01 g	II	83021344
EX1103N	*	1100 g	1 mg	0.01 g	I	83021352
EX4202N	*	4200 g	0.01 g	0.1 g	II	83021359
EX10202N	*	10200 g	0.01 g	0.1 g	I	83021364
EX10201N	*	10200 g	0.1 g	0.1 g	I	83021367

N = NTEP / Measurement Canada approved

Precision & Analytical Balances

Explorer® High Capacity

Rugged design meets high performance

- Explorer High Capacity balances have a readability of 0.1 mg and capacities up to 35kg
- IP54 rated and suitable for use in industrial environments
- An optional rechargeable battery, column mount, and wheel kits allow for untethered portability for up to 10 hours



Model	AutoCal	Capacity	Readability	Item No
EX12001	*	12000 g	0.1 g	30057099
EX24001	*	24000 g	0.1 g	30057100
EX35001	*	35000 g	0.1 g	30057101

Adventurer® Analytical

Ready For Your Lab, Wherever That May Be

- Cascading draft shield doors slide into themselves, the 2-piece doors preserve space behind the balance to minimize the balance's footprint and conserve workspace
- Ability to store GLP/GMP data and a real time clock allows data to be saved and printed with relevant information for traceability and archiving
- RS-232 and USB communication interfaces allow for printer and PC communication. A USB host port allows internally stored records to be transferred to a PC via memory stick



Model	AutoCal	Capacity	Readability	Item No
AX124/E		120 g	0.1 mg	30100601
AX124	*	120 g	0.1 mg	30100600
AX224/E		220 g	0.1 mg	30100603
AX224	*	220 g	0.1 mg	30100602
AX324	*	320 g	0.1 mg	30100604

Model	AutoCal	Capacity	Readability	Certified Readability	Class	Item No
AX224N	*	220 g	0.1 mg	1 mg	I	30100630

N = NTEP / Measurement Canada approved

Precision & Analytical Balances

Adventurer® Precision

Ready For Your Lab, Wherever That May Be

- A 4.3" color touch screen and intuitive user interface along with fixed mechanical keys make the Adventurer balances efficient and easy to use
- Ability to store GLP/GMP data and a real time clock allows data to be saved and printed with relevant information for traceability and archiving
- RS-232 and USB communication interfaces allow for printer and PC communication. A USB host port allows internally stored records to be transferred to a PC via memory stick



Model	In Cal	Capacity	Readability	Item No
AX223/E		220 g	1 mg	30100606
AX223	*	220 g	1 mg	30100605
AX423/E		420 g	1 mg	30100608
AX423	*	420 g	1 mg	30100607
AX523/E		520 g	1 mg	30100610
AX523	*	520 g	1 mg	30100609
AX422/E		420 g	0.01 g	30127981
AX622	*	620 g	0.01 g	30122632
AX822/E		820 g	0.01 g	30127983
AX1502/E		1500 g	0.01 g	30100612
AX1502	*	1500 g	0.01 g	30100611
AX2202/E		2200 g	0.01 g	30100614
AX2202	*	2200 g	0.01 g	30100613
AX4202/E		4200 g	0.01 g	30100616
AX4202	*	4200 g	0.01 g	30100615
AX5202	*	5200 g	0.01 g	30100617
AX2201/E		2200 g	0.1 g	30248912
AX4201	*	4200 g	0.1 g	30122634
AX4201/E		4200 g	0.1 g	30122635
AX8201	*	8200 g	0.1 g	30100618
AX8201/E		8200 g	0.1 g	30100619

Model	AutoCal	Capacity	Readability	Certified Readability	Class	Item No
AX223N/E		220 g	1 mg	0.01 g	II	30100631
AX423N	*	420 g	1 mg	0.01 g	II	30100632
AX423N/E		420 g	1 mg	0.01 g	II	30100633
AX523N/E		520 g	1 mg	0.01 g	II	30100634
AX622N/E		620 g	0.01 g	0.1 g	II	30100635
AX1502N/E		1500 g	0.01 g	0.1 g	II	30100636
AX2202N/E		2200 g	0.01 g	0.1 g	II	30100637
AX4202N/E		4200 g	0.01 g	0.1 g	II	30122655
AX8201N/E		8200 g	0.1 g	1 g	II	30100639

N = NTEP / Measurement Canada approved

Pioneer Semi-Micro

Combining Economy and High Performance for Essential Weighing

- Economical Semi-micro balances capable of weighing with a readability of 0.01 mg
- A static removal bar along the top of the draftshield provides a convenient grounding location, allowing the user to quickly dissipate any static charge that could negatively affect weighing results
- A brightly lit dual line display displays the weight in an easy to read manner, while a second dot-matrix second line provides additional information or guidance prompts to the user



Model	In Cal	Capacity	Readability	Item No
PX85	*	82 g	0.01 mg	30475733
PX225D	*	120 g ; 220 g	0.01 mg; 0.1 mg	30475734

Precision & Analytical Balances

Pioneer® Analytical Combining Economy and High Performance for Essential Weighing

- A static removal bar along the top of the draftshield provides a convenient grounding location, allowing the user to quickly dissipate any static charge that could negatively affect weighing results
- A brightly lit dual line display displays the weight in an easy to read manner, while a second dot-matrix second line provides additional information or guidance prompts to the user
- Internal Calibration* allows the balance to be quickly calibrated and adjusted with the push of a button thereby eliminating the expense and maintenance of separate calibration weights



* = on some models

Model	In Cal	Capacity	Readability	Item No
PX84/E		82 g	0.1 mg	30429845
PX84	*	82 g	0.1 mg	30429837
PX124/E		120 g	0.1 mg	30429846
PX124	*	120 g	0.1 mg	30429838
PX224/E		220 g	0.1 mg	30429847
PX224	*	220 g	0.1 mg	30430053

Pioneer® Precision

Combining Economy and High Performance for Essential Weighing

- A brightly lit dual line display displays the weight in an easy to read manner, while a second dot-matrix second line provides additional information or guidance prompts to the user
- PX units feature a cast metal lower housing and stainless steel weighing pan; the Pioneer PX is durably constructed for long-term use and suitable for a variety of applications
- Internal Calibration* allows the balance to be quickly calibrated and adjusted with the push of a button thereby eliminating the expense and maintenance of separate calibration weights



* = on some models

Model	In Cal	Capacity	Readability	Item No
PX163/E		160 g	1 mg	30429848
PX163	*	160 g	1 mg	30429839
PX323/E		320 g	1 mg	30429849
PX323	*	320 g	1 mg	30429840
PX523/E		520 g	1 mg	30430057
PX523	*	520 g	1 mg	30430054
PX1602/E		1600 g	0.01 g	30430058
PX1602	*	1600 g	0.01 g	30430055
PX2202/E		2200 g	0.01 g	30429850
PX2202	*	2200 g	0.01 g	30429841
PX3202/E		3200 g	0.01 g	30429851
PX3202	*	3200 g	0.01 g	30429842
PX4202/E		4200 g	0.01 g	30429852
PX4202	*	4200 g	0.01 g	30429843
PX2201/E		2200 g	0.1 g	30430059
PX2201	*	2200 g	0.1 g	30430056
PX4201/E		4200 g	0.1 g	30429853
PX4201	*	4200 g	0.1 g	30429844

Moisture Analyzers

MB Series

Moisture Analyzers to Fit Your Budget and Application



- Quickly determine the moisture content of all types of samples
- A full line up of devices to fit your budget and application
- Excellent performance due to state of the art heating elements weighing cells designed specifically for moisture analyzers

MB120

OHAUS' Flagship and Most Fully Featured Moisture Analyzer

- Provides on board storage for up to 100 methods and 1000 measurement results which can be recalled on the device or exported
- Offers method creation tools such as temperature guide which assists the user in determining the optimum drying temperature for their sample
- Advanced functionality such as 4 drying programs, customizable shut off criteria, and drying temperatures up to 230°C allow for creation of advanced methods



Model	Heating	Capacity	Readability	Moisture Readability	Item No
MB120	Halogen	120 g	1 mg	0.01%	30241165

Moisture Analyzers

MB90

Easy to Use and Maintain and Well Suited for Routine Measurements

- A 4.3" color touch screen and intuitive user interface make the MB90 easy to use. An on-screen keyboard makes data input simple
- The heating chamber can be disassembled without tools making the MB90 easy to clean and maintain
- The advanced halogen heating system provides even heat to the surface of the sample providing high precision (low variance across multiple measurements) and 0.01% moisture readability



Model	Heating	Capacity	Readability	Moisture Readability	Item No
MB90	Halogen	90 g	1 mg	0.01%	30241164

MB27

Perfect for Routine, Basic Measurements

- The MB27 features a halogen heating system and 1 mg weight readability provides precise results with a moisture readability of 0.01%
- Setup and operation are extremely easy; the drying temperature and shut off criterion can be set through a simple interface
- A small footprint takes up less space on a lab countertop or production area



Model	Heating	Capacity	Readability	Moisture Readability	Item No
MB27	Halogen	90 g	1 mg	0.01%	30251683

Scout® STX

Setting New Standards in Laboratory & Industrial Weighing - The Next Generation of Scout Balances



- The Scout STX can handle all types of laboratory weighing applications such as density determination, animal weighing, mole weighing and more
- The Scout STX informative color touchscreen display guides you through every step of the processes involved in operating the balance; on-screen buttons, settings, and application modes are all clearly labeled
- Entering important GLP data is easy with an on-screen, alpha-numeric keyboard and the touchscreen won't interfere with how you work; you can wear gloves while operating it
- Spills won't be a problem with the touchscreen display's easy-to-clean sealed front panel while the mechanical keys can handle the stress of repetitive use

Scout® SPX

Setting New Standards in Laboratory & Industrial Weighing - The Next Generation of Scout Balances



- The Scout SPX has the features needed for various laboratory applications including percent weighing, totalization, display hold and more
- The Scout's small footprint and light weight make it ideal for use in multiple locations around your lab, occupying minimal bench space and easily moved
- With expanded connectivity options including RS232, USB Host, USB Device, Ethernet and Bluetooth®, the Scout is the perfect complement to your data collection and transfer needs
- With improved resolution, you can count on extremely precise and repeatable weighing results. Additionally, the increased capacity of the Scout gives you more flexibility in the lab

Scout® STX

Setting New Standards in Laboratory & Industrial Weighing - The Next Generation of Scout Balances

- Large, resilient color touchscreen allows for effortless operation of the Scout through its informative icon driven menu structure, guiding the user through every step of the weighing application
- Stabilization time as fast as 1 second means increased productivity in your facility. Equipped with advanced weighing technology, the Scout also ensures repeatable and reliable weighing results
- Integrated superior overload protection system rated at 10 times the capacity protects the balance in rugged and demanding environments. The space-saving, slim design allows for stackable storage



Model	Capacity	Readability	Pan Size	Item No.
STX123	120 g	0.001 g	Ø 3.7 in / Ø 93 mm	30253005
STX223	220 g	0.001 g	Ø 3.7 in / Ø 93 mm	30253006
STX222	220 g	0.01 g	Ø 4.7 in / Ø 120 mm	30253007
STX422	420 g	0.01 g	Ø 4.7 in / Ø 120 mm	30253008
STX622	620 g	0.01 g	Ø 4.7 in / Ø 120 mm	30253009
STX1202	1200 g	0.01 g	5.5 in x 6.7 in / 140 mm x 170 mm	30253010
STX2202	2200 g	0.01 g	5.5 in x 6.7 in / 140 mm x 170 mm	30253011
STX421	420 g	0.1 g	Ø 4.7 in / Ø 120 mm	30253012
STX621	620 g	0.1 g	5.5 in x 6.7 in / 140 mm x 170 mm	30253013
STX2201	2200 g	0.1 g	5.5 in x 6.7 in / 140 mm x 170 mm	30253014
STX6201	6200 g	0.1 g	5.5 in x 6.7 in / 140 mm x 170 mm	30253015
STX8200	8200 g	1 g	5.5 in x 6.7 in / 140 mm x 170 mm	30253016

Portable Balances

Scout® SPX

Setting New Standards in Laboratory & Industrial Weighing - The Next Generation of Scout Balances

- Large, resilient color touchscreen allows for effortless operation of the Scout through its informative icon driven menu structure, guiding the user through every step of the weighing application
- Stabilization time as fast as 1 second means increased productivity in your facility. Equipped with advanced weighing technology, the Scout also ensures repeatable and reliable weighing results
- Integrated superior overload protection system rated at 10 times the capacity protects the balance in rugged and demanding environments. The space-saving, slim design allows for stackable storage



Model	Capacity	Readability	Pan Size	Item No.
SPX123	120 g	0.001 g	Ø 3.7 in / Ø 93 mm	30253017
SPX223	220 g	0.001 g	Ø 3.7 in / Ø 93 mm	30253018
SPX222	220 g	0.01 g	Ø 4.7 in / Ø 120 mm	30253019
SPX422	420 g	0.01 g	Ø 4.7 in / Ø 120 mm	30253020
SPX622	620 g	0.01 g	Ø 4.7 in / Ø 120 mm	30253021
SPX1202	1200 g	0.01 g	5.5 in x 6.7 in / 140 mm x 170 mm	30253022
SPX2202	2200 g	0.01 g	5.5 in x 6.7 in / 140 mm x 170 mm	30253023
SPX421	420 g	0.1 g	Ø 4.7 in / Ø 120 mm	30253024
SPX621	620 g	0.1 g	5.5 in x 6.7 in / 140 mm x 170 mm	30253025
SPX2201	2200 g	0.1 g	5.5 in x 6.7 in / 140 mm x 170 mm	30253026
SPX6201	6200 g	0.1 g	5.5 in x 6.7 in / 140 mm x 170 mm	30253027
SPX8200	8200 g	1 g	5.5 in x 6.7 in / 140 mm x 170 mm	30253028

Frontier® Centrifuges

Covers a Full Range of Centrifugation Applications



- Variety of rotors and accessories to meet specific application needs
- Intuitive user interface to quickly set parameters such as speed, temperature and time
- Safety features such as rotor imbalance sensor, auto-rotor recognition and aerosol tight rotors protect the user and delicate samples

Centrifuges

Frontier™ 5000 Series Mini

Personal Mini Centrifuge

- Extremely compact footprint for personal use
- Quick-release rotor system enables rotors to be changed without tools
- Powerful motor reaches maximum fixed speed of 6,000 rpm or 2,000 x g
- Built safe with imbalance sensor and rubber base to absorb vibration

Applications: Quick Spin-downs of micro tubes



Model	Maximum Speed	Max g-force	Capacity	Dimensions (L x W x H)	Item No.
FC5306	6,000 rpm	2,000 g	8 × 1.5 ml / 2.0 ml; 4 × 8 place PCR Strips	6.6 × 5.9 × 5" (168 × 150 × 128 mm)	30134157

Frontier™ 5000 Series Micro

For High Speed Refrigerated and Non Refrigerated Centrifuge Applications

- Reaches RCF of 21,953 x g, ideal for high-speed lab applications
- Rotors for 1.5/2/5mL tubes, spin columns, PCR strips and hematocrits
- Backlit LCD display projects information in real-time
- Safety features include motorized lid-lock and rotor imbalance sensor



Applications: Molecular Biology, DNA and Protein Separations

Model	Speed Range	Temp Range	Max g-force	Dimensions (L X W X H)	Item No.
FC5513	200 rpm -13,500 rpm	Air Cooled	17,317 g	11.0 x 9.4 x 13.8 in (280 x 240 x 350 mm)	30393188
FC5515	200 rpm- 15,200 rpm	Air Cooled	21,953 g	15.43 x 11.3 x 11.5" (392 x 287 x 292 mm)	30130867
FC5515R	200 rpm- 15,200 rpm	-20° to 40°C	21,953 g	21.85 x 11.3 x 11.5" (555 x 287 x 292 mm)	30130869

Centrifuges

Frontier™ 5000 Series Multi Compact Low Volume Design

- Speed ranges from 200-6,800 RPMs, ideal for general lab work
- Versatile with rotors to accommodate tubes ranging from 1.5 to 50mL
- Intuitive controls panel allows user to set and view rpm and g-force
- Compact footprint saves valuable bench space



Applications: Low speed centrifugation, Cell Culture, Clinical

Model	Speed Range	Max g-force	Capacity	Dimensions (L x W X H)	Item No.
FC5706 120V	200 rpm– 6,000 rpm	4,427 g	6 × 50 ml	15.4 x 11.5 x 10.5" (392 x 291 x 266 mm)	30130876
FC5707 100- 230V*	200 rpm –6,800 rpm	4,445 g	8x15ml RB/ 4x15ml FA	11.0 x 9.4 x 13.8 in (280 x 240 x 350 mm)	30393189

Frontier™ 5000 Series Multi Pro General Purpose Covers Most Centrifugation Needs

- Speeds ranging from 200-18,000 RPMs, cover research to general lab use
- Refrigerated and ambient models control temperature from -20°C – 40°C
- Wide selection of fixed angle or swing out rotors provide flexibility
- User-safe with motor lidlock, rotor imbalance sensor and sealed rotors

Applications: Molecular Biology, Cell Culture and Protein Separations



Model	Speed Range	Temp Range	Max g-force	Dimensions (L X W X H)	Item No.
FC5714	200 rpm–14,000 rpm	Air Cooled	18,624 g	19.4 x 14.25 x 14.25" (14.25 x 362 x 362 mm)	30314811
FC5718	200 rpm–18,000 rpm	Air Cooled	23,542 g	19.65 x 16.06 x 13.82" (499 x 408 x 351 mm)	30314813
FC5718R	200 rpm–18,000 rpm	-20° to 40°C	23,542 g	28.78 x 16.02 x 14.13" (731 x 407 x 359 mm)	30314815
FC5816	200 rpm–15,000 rpm	Air Cooled	21,379 g	21.18 x 21.18 x 13.94" (538 x 446 x 354 mm)	30314817
FC5816R	200 rpm–16,000 rpm	-20° to 40°C	24,325 g	21.18 x 28.46 x 28.46" (28.46 x 723 x 354 mm)	30314819

Centrifuges

Frontier™ 5000 Rotors

Offering Flexibility to Maximize Sample Preparation



- Quality rotors withstand autoclave and sub-zero temperature conditions
- Rotors and buckets designed to be effortlessly installed or removed
- Variety of accessories cover basic to complex sample preparation needs
- Safety features include aerosol tight lids and auto-rotor recognition



Applications: General Sample Prep, high and low speed centrifugation

Model	Rotor Style	Capacity	Max g-force	Maximum Speed	Item No.
R-A8 × 2/6M	Angle	8 × 1.5 / 2.0 ml	2,560 g	6,000 rpm	30129559
R-A4 × PCR/6		4 × 0.2 ml PCR8	2,260 g		30129560
R-A24 × 2/15M		24 × 1.5 / 2.0 ml	21,953 g	15,200 rpm	30130870
R-A24 × 2/15MS					30130871
R-A30 × 2/13MS		30 × 1.5 / 2.0 ml	19,150 g	13,500 rpm	30130872
R-A12 × 5/14MS		12 × 5 ml	19,978 g	14,500 rpm	30130873
R-A4 × PCR/15		4 × 0.2 ml PCR8	15,342 g	15,000 rpm	30130874
R-A12 × 15/6M		12 × 15 ml	4,427 g	6,000 rpm	30130877
R-A6 × 50/6M	6 × 50 ml	30130878			
R-S6 × 5/4	Swing out	6 × 5 ml	1,817 g	4,000 rpm	30130880
R-A24 × CAP/12	Angle	24 × Capillaries	14,970 g	12,000 rpm	30130881
R-A24 × 2/16MIS		24 × 1.5 / 2.0 ml	24,325 g	16,000 rpm	30304361
R-S4 × 250/4MI	Swing out	4 × 250 ml	3,780 g	4,500 rpm	30314820
R-A6 × 250/8MI	Angle	6 × 250 ml	10,016 g	8,000 rpm	30314821
R-S4 × 100/4MI	Swing out	4 × 100 ml	3,350 g	4,500 rpm	30314822
R-S4 × 100/5MIS			3,885 g	5,000 rpm	30314823
R-S6 × MTP/4MI			2 × 3 MTP	2,716 g	4,500 rpm
R-A6 × 85/14MI	Angle	6 × 85 ml	20,984 g	13,500 rpm	30314825
R-A6 × 85/13MI			21,726 g	13,000 rpm	30314826
R-A4 × 85/12MI			14,809 g	12,000 rpm	30314827
R-S16 × 50/4MI	Swing out	16 × 50 ml	3,735 g	4,500 rpm	30314828
R-A10 × 50/10MI	Angle	10 × 50 ml	16,022 g	10,500 rpm	30314829
R-A6 × 50/6MI		6 × 50 ml	4,427 g	6,000 rpm	30314830
R-A6 × 50/13MI			15,869 g	13,000 rpm	30314831
R-A30 × 15/4MI		30 × 15 ml	2,830 g	4,500 rpm	30314832
R-A20 × 10/12MI		20 × 10 ml	15,775 g	12,000 rpm	30314833
R-A12 × 15/6MI		12 × 15 ml	4,427 g	6,000 rpm	30314834
R-A44 × 2/16MI		44 × 1.5 / 2.0 ml	24,325 g	16,000 rpm	30372718
R-A30 × 2/14MIS		30 × 1.5 / 2.0 ml	20,595 g	14,000 rpm	30314836
R-A24 × 2/16MI		24 × 1.5 / 2.0 ml	24,325 g	16,000 rpm	30314838
R-A12 × 2/18MI		12 × 1.5 / 2.0 ml	23,542 g	18,000 rpm	30314839
R-A64 × 0.5/13I		64 × 0.5 ml	16,298 g	13,500 rpm	30314840
R-A4 × PCR/15I		4 × 8-w PCR Strip	15,343 g	15,000 rpm	30314841

Open Air Shakers

Offers a Variety of Shaking Motions, Including Orbital, Rocking, Waving and Reciprocating



- Multiple models with 4 different platform motions to choose from
- Large assortment of tube and flask accessories to meet specific workflow needs
- Rugged design with microprocessor controls for long-lasting accurate performance

Open Air Shakers

Light Duty Orbital Shakers

Designed for Basic Sample Shaking

- Designed for applications with loads under 8 lbs
- Available with 3mm or 15mm orbit to optimize sample mix
- Triple-eccentric counterbalanced drive offers years of reliable use
- Safety features include slow speed ramp and overload protection



Applications: Elisa and cell metabolism assays, Chemical reactions

Model	Orbit/Angle	Speed Range	Max Weight Capacity	Tray Size	Item No.
SHLD0415AL	15 mm (0.6")	40 to 300 rpm	8 lbs (3.6 kg)	11.75 × 8.75" (29.9 × 22.2 cm)	30391891
SHLD0403DG	3 mm (0.12")	100 to 1200 rpm	8 lbs (3.6 kg)	11.75 × 8.75" (29.9 × 22.2 cm)	30391898
SHLD0415DG	15 mm (0.6")	40 to 300 rpm	8 lbs (3.6 kg)	11.75 × 8.75" (29.9 × 22.2 cm)	30391912
SHLDMP03DG	3 mm (0.12")	100 to 1200 rpm	4 microplates or 2 micro-tube racks	11 × 7.75" (27.9 × 19.7 cm)	30391905

Heavy Duty Orbital Shakers

Rugged Design for Shaking Heavy Samples

- Designed for applications with heavy loads up to 150 lbs
- Available with 19, 25 or 51 mm orbits to optimize sample mix
- Triple-eccentric counterbalanced drive offers years of reliable use
- Wide assortment of accessories accommodates tubes, flasks and funnels

Applications: High-Throughput procedures, Bacterial Cell Culture



Model	Orbit/Angle	Speed Range	Max Weight Capacity	Tray Size	Item No.
SHHD1619AL	19 mm (0.75")	25 to 500 rpm	35 lbs (16 kg)	11 × 13" (27.9 × 33 cm)	30391307
SHHD1619DG	19 mm (0.75")	15 to 500 rpm	35 lbs (16 kg)	11 × 13" (27.9 × 33 cm)	30391807
SHHD2325AL	25 mm (1")	25 to 500 rpm	50 lbs (22.7 kg)	18 × 24" (45.7 × 61 cm)	30391835
SHHD2325DG	25 mm (1")	20 to 500 rpm	50 lbs (22.7 kg)	18 × 24" (45.7 × 61 cm)	30391842
SHHD4525DG	25 mm (1")	15 to 500 rpm	100 lbs (45.4 kg)	24 × 24" (61 × 61 cm)	30391863
SHHD4550DG	51 mm (2")	15 to 500 rpm	100 lbs (45.4 kg)	24 × 24" (61 × 61 cm)	30391870
SHHD6825DG	25 mm (1")	15 to 500 rpm	150 lbs (68 kg)	24 × 36" (61 × 91 cm)	30391877
SHHD6850DG	51 mm (2")	15 to 300 rpm	150 lbs (68 kg)	24 × 36" (61 × 91 cm)	30391884

Open Air Shakers

Extreme Environment Shakers

Sealed Housing Withstands CO2 and Other Harsh Environments

- Designed for use in CO2 incubators or environments up to 100% humidity
- Control shaker from outside incubator with detachable control module
- Triple-eccentric counterbalanced drive offers years of reliable use
- Precise controls for slow speed ramping to avoid sample from splashing



Applications: Cell culture, Mammalian/Bacterial cell culture

Model	Orbit/Angle	Speed Range	Max Weight Capacity	Tray Size	Item No.
SHEX1619DG	0.75" (19 mm)	15 to 500 rpm	35 lbs (16 kg)	11 × 13" (27.9 × 33 cm)	30391809

Rocking & Waving Shakers

Back and Forth or 3D Platform Motion

- Designed for applications with loads ranging from 5-16lbs
- Electronic or manual tilt adjustment while unit is running
- Designed to work in CO2 environments from -10-60° C and 80% RH



Applications: Antibodily Staining, Room Temp. reactions, Blotting, and cell culture procedures.

Model	Tilt Angle	Speed Range	Max Weight Capacity	Tray Size	Item No.
SHRK07AL1	0 to 15°*	1 to 75 rpm*	16 lbs (7.3 kg)**	14 × 11" (35.6 × 27.9 cm)	30391959
SHRK07AL2	0 to 15°*	1 to 75 rpm*	16 lbs (7.3 kg)**	14 × 11" (35.6 × 27.9 cm)	30391966
SHRK04DG	0 to 15°*	1 to 50 rpm*	10 lbs (4.5 kg)**	12.75 × 10" (32.4 × 25.4 cm)	30391994
SHWV02AL	0 to 16°*	1 to 75 rpm*	5 lbs (2.3 kg)**	14 × 11" (35.6 × 27.9 cm)	30391973
SHWV02DG	0 to 20°*	1 to 30 rpm*	5 lbs (2.3 kg)**	11.75 × 8.75" (29.9 × 22.2 cm)	30391947

* Maximum speed/tilt angle may vary with heavy or unbalanced loads.

** Centered on tray.

Open Air Shakers

Reciprocating Shakers

Side to Side Platform Motion

- Designed for applications with loads up to 15 lbs
- Microprocessor control provides consistent uniform shaking action
- Designed to work in CO2 environments from -10-60° C and 80% RH



Applications: Bacterial growth and dissolution assays

Model	Orbit/Angle	Speed Range	Max Weight Capacity	Tray Size	Item No.
SHRC0719DG	0.75" (19 mm)	15 to 500 rpm	35 lbs (16 kg)	11 × 13" (27.9 × 33 cm)	30391828

Incubating & Incubating Cooling Shakers Combines Temperature Control and Shaking All Under One Lid



- Precise temperature and speed control to protect delicate samples
- Wide variety of clamps and tube racks to accommodate most vessel sizes
- Heating and cooling capabilities replicate environments between 17°C below ambient to 100°C

Incubating Cooling Thermal Shakers

Heating, Cooling and Shaking Features

Combined in One Unit

- Designed for applications requiring precise shaking and temp control
- Able to set up to five separate, 5-step programs
- Cooling model has temperature range from 17°C below ambient to 100°C.



Applications: Tissue cultures, liquid Cell culture, Bacterial culture growth

Model	Orbit	Speed Range	Temperature Range	Cooling Rate	Heating Rate	Item No.
ISTHBLHTS	3 mm (0.12")	300 to 3000 rpm	4°C above ambient to 100°C	above ambient 2-3°C/min	5°C/min	30392003
ISTHBLCTS	3 mm (0.12")	300 to 3000 rpm	± 0.5°C between 20°C and 45°C ± 2°C below 20°C and above 45°C	below ambient 0.5-1.0°C/min	5°C/min	30391996

Incubating Light Duty Orbital Shakers

Heat and Shake Your Samples in One Compact Footprint

- Precise temperature control incubates samples from ambient +5°C – 65°C
- Save valuable bench space with incubating and shaker features combined
- Wide assortment of accessories accommodates most tubes and flasks



Applications: Generation of DNA, RNA, proteins, and antibodies

Model	Orbit	Speed Range	Temperature Range	Max Weight Capacity	Item No.
ISLD04HDG	3 mm (0.12")	100 to 1200 rpm	Ambient +5°C to 65°C	8 lbs (3.6 kg)	30391924
ISLDMPHDG	3 mm (0.12")	100 to 1200 rpm	Ambient +5°C to 65°C	4 microplates or 2 micro-tube racks	30391938
ISLDMPHDGL*	3 mm (0.12")	100 to 1200 rpm	Ambient +5°C to 65°C		30391931

*Unit includes opaque lid

Incubating Cooling Orbital Shaker

Heating, Cooling and Shaking Features

Combined in One Unit

- Designed to incubate samples from 10° below ambient to 65°C
- Independent LED displays for temperature, speed and time
- Accommodates 2 microplates or 2 interchangeable modular blocks



Applications: Temperature induced induction procedures below ambient temp

Model	Orbit	Speed Range using Microplates	Speed Range using Modular Blocks	Temperature Range	Max Weight Capacity	Item No.
ISICMBCDG	3 mm (0.12")	100 to 1200 rpm	100 to 600 rpm	10°C below ambient to 65°C	2 microplates or 2 modular blocks	30391945

Incubating Rocking and Waving Shakers

One-of-a-kind Shaking Motion and Heating

Under One Lid

- Designed to incubate while either rocking or waving samples
- Save valuable bench space with incubating and shaker features combined
- Provides smooth rocking or waving action so as not to disrupt samples



Applications: Blotting techniques, Pre-stain non-specific blocking

Model	Tilt Angle	Speed Range	Temperature Range	Max Weight Capacity	Item No.
ISRK04HDG	0 to 15° *	1 to 50 rpm *	Ambient +5°C to 65°C	10 lbs (4.5 kg) **	30391980
ISWV02HDG	0 to 20° *	1 to 30 rpm *	Ambient +5°C to 65°C	5 lbs (2.3 kg) ** racks	30391987

* Maximum speed/tilt angle may vary with heavy or unbalanced loads.

** Centered on tray.

Shaker Accessories

- Variety of platforms for mounting flask clamps or test tube racks
- Choose from 18 sizes of stainless steel or molded PVC flask clamps
- Dedicated clamp platforms come pre-mounted to maximize platform space



Extreme Environment and Heavy Duty Shaker Accessories

Accessories	Item No.
18 × 18" (45.7 × 45.7 cm) Culture Platform	30400066
18 × 24" (45.7 × 61 cm) Culture Platform	30400067
13 × 13" (33 × 33 cm) Dedicated Platform / 125 mL Flask Clamp	30400075
13 × 13" (33 × 33 cm) Dedicated Platform / 250 mL Flask Clamp	30400076
13 × 13" (33 × 33 cm) Dedicated Platform / 500 mL Flask Clamp	30400077
13 × 13" (33 × 33 cm) Dedicated Platform / 1 L Flask Clamp	30400078
18 × 18" (45.7 × 45.7 cm) Dedicated Platform / 125 mL Flask Clamp	30400079
18 × 18" (45.7 × 45.7 cm) Dedicated Platform / 250 mL Flask Clamp	30400080
18 × 18" (45.7 × 45.7 cm) Dedicated Platform / 500 mL Flask Clamp	30400081
18 × 18" (45.7 × 45.7 cm) Dedicated Platform / 1 L Flask Clamp	30400082
18" (45.7 cm) Adjustable Bar (with Mounting Hardware)	30400083
Two-Tier Braces (set of 4)	30400051

Heavy Duty Shaker Accessories

Accessories	Item No.
4-bar Large Vessel Carrier Platform	30400070
4-bar Large Vessel Carrier Platform	30400071
5-bar Large Vessel Carrier Platform	30400072

Incubating Cooling Thermal Shaker Accessories

Accessories	Item No.
24 x 2.0 mL Cryotubes	30400133
30 x 0.5 mL Microtubes	30400129
24 x 1.5 mL Microtubes	30400130
24 x 2.0 mL Microtubes	30400131
24 x 5-7 mL Tubes	30400132
Microplate Thermal Block with Lid	30400126
384 Well Plate Thermal Block with Lid	30400127
0.2 mL PCR Plate Thermal Block with Lid	30400128
5 mL Eppendorf Tube Block	30400134
15 mL Conical Tubes	30400135
50 mL Conical Tubes	30400136

Light Duty Shaker Accessories

Accessories	Item No.
8.6" (21.8 cm) Adjustable Bar (with Mounting Hardware)	30400122
18" (45.7 cm) Adjustable Bar (with Mounting Hardware)	30400073
2-bar Adjustable Platform	30400121
4-bar Adjustable Platform	30400068
4-bar Adjustable Platform	30400069
18" (45.7 cm) Adjustable Bar (with Mounting Hardware)	30400073
24" (61 cm) Adjustable Bar (with Mounting Hardware)	30400074
Dilution Cup Tray	30400125
Universal Harness	30400123

Open Air and Incubating Shaker Accessories

Accessories	Item No.
11 x 13 Platform (4 Microplate Clamps)	30400052
13 x 13 Platform (6 Microplate Clamps)	30400053
18 x 18 Platform (12 Microplate Clamps)	30400054
18 x 24 Platform (18 Microplate Clamps)	30400056
18 x 30 Platform (21 Microplate Clamps)	30400057

Open Air and Incubating Shaker Accessories

Accessories	Item No.
24 x 24 Platform (24 Microplate Clamps)	30400058
24 x 36 Platform (36 Microplate Clamps)	30400059
Microplate Clamp	30400104
Stacking Tray, 12.75 x 10" (32.4 x 25.4 cm)	30400114
10 mL Erlenmeyer Flask Clamp	30400084
25 mL Erlenmeyer Flask Clamp	30400085
50 mL Erlenmeyer Flask Clamp	30400086
125 mL Erlenmeyer Flask Clamp	30400087
250 mL Erlenmeyer Flask Clamp	30400088
500 mL Erlenmeyer Flask Clamp	30400089
1 L Erlenmeyer Flask Clamp	30400090
2 L Erlenmeyer Flask Clamp	30400091
2.8 L Fernbach Flask Clamp	30400092
3 L Fernbach Flask Clamp	30400093
4 L Erlenmeyer Flask Clamp	30400094
5 L Erlenmeyer Flask Clamp	30400095
11 x 13" (27.9 x 33 cm) Rubber Mat	30400060
13 x 13" (33 x 33 cm) Rubber Mat	30400061
18 x 18" (45.7 x 45.7 cm) Rubber Mat	30400062
18 x 24" (45.7 x 61 cm) Rubber Mat	30400063
24 x 24" (61 x 61 cm) Rubber Mat	30400064
24 x 36" (61 x 91.4 cm) Rubber Mat	30400065
6 L Erlenmeyer Flask Clamp	30400096
500 mL Media Bottle Clamp	30400097
1 L Media Bottle Clamp	30400098
125 mL Erlenmeyer Flask Clamp	30400099
250 mL Erlenmeyer Flask Clamp	30400100
500 mL Erlenmeyer Flask Clamp	30400101
1 L Erlenmeyer Flask Clamp	30400102
2 L Erlenmeyer Flask Clamp	30400103

Open Air and Incubating Shaker Accessories

Accessories	Item No.
1.5 to 2 mL Micro-Tube Rack Half Size, Stationary	30400114
10 to 13 mm Test Tube Rack Half Size, Stationary	30400115
14 to 16 mm Test Tube Rack Half Size, Stationary	30400116
18 to 20 mm Test Tube Rack Half Size, Stationary	30400117
22 to 25 mm Test Tube Rack Half Size, Stationary	30400118
15 mL Centrifuge Tube Rack Half Size, Stationary	30400119
50 mL Centrifuge Tube Rack Half Size, Stationary	30400120
10 to 14 mm Test Tube Rack Full Size, Stationary	30400110
16 to 20 mm Test Tube Rack Full Size, Stationary	30400111
21 to 25 mm Test Tube Rack Full Size Stationary	30400112
50 mL Centrifuge Tube Rack Full Size, Stationary	30400113
13 mm Test Tube Rack Full Size, Pivoting	30400105
16 mm Test Tube Rack Full Size, Pivoting	30400106
20 mm Test Tube Rack Full Size, Pivoting	30400107
25 mm Tube Rack Full Size, Pivoting	30400108
30 mm Tube Rack Full Size, Pivoting	30400109
11 × 13" (27.9 × 33 cm) Universal Platform	30400052
13 × 13" (33 × 33 cm) Universal Platform	30400053
18 × 18" (45.7 × 45.7 cm) Universal Platform	30400054
18 × 24" (45.7 × 61 cm) Universal Platform	30400056
24 × 24" (61 × 61 cm) Universal Platform	30400057
18 × 30" (45.7 × 76.2 cm) Universal Platform	30400058
24 × 36" (61 × 91.4 cm) Universal Platform	30400059
Two-Tier Braces (set of 4)	30400051

Rocking and Waving Shaker Accessories

Accessories	Item No.
Dimpled Mat, 12.75 × 10" (32.4 × 25.4 cm)	30400140
Dimpled Mat, 11.75 × 8.75" (29.9 × 22.2 cm)	30400142
Dimpled Mat, 10 × 7.5" (25.4 × 19.1 cm)	30400141
Dimpled Mat, 9.25 × 7.25" (23.5 × 18.4 cm)	30400143
Dimpled Mat, 11.75 × 8.75" (29.9 × 22.2 cm)	30400124
Dimpled Mat, 14 × 11" (35.6 × 27.9 cm)	30400144
Stacking Tray, 12.75 × 10" (32.4 × 25.4 cm)	30400137
Stacking Tray, 11.75 × 8.75" (29.9 × 22.2 cm)	30400138
Stacking Tray, 14 × 11" (35.6 × 27.9 cm)	30400139

Vortex Mixers

Choose from Single Tube to Multi-Tube Walk-Away Vortexers



- Sturdy and stable design to withstand high-speed vortexing action
- Wide selection of accessories to accommodate popular tube sizes and microplates
- Multiple orbit sizes to choose from ranging from 2.5mm to 4.9mm to optimize vortex mix

Vortex Mixers

Mini Vortex Mixers

Mini Yet Rugged, Heavy Design

- Sturdy design remains stable on the bench even during high mixing
- Over 20 accessories to accommodate a variety of tubes and microplates
- Analog and digital models available for precise speed control



Applications: Protein based solutions, Antibody solution prep, quick mixing

Model	Speed Range	Orbit	Controls	Duty Rating	Item No.
VXMNFS	3200 rpm	4.9 mm (0.19")	None	Intermittent	30392108
VXMNAL	300 to 3200 rpm	4.9 mm (0.19")	Analog	Intermittent	30392115
VXMNDG	500 to 3000 rpm	4.9 mm (0.19")	Digital	Intermittent	30392122
VXMNPS	500 to 3000 rpm	2.5 mm (0.098")	Digital	Intermittent	30392129

Heavy-Duty Vortex Mixers

For High Sample Capacity Vortexing

- Designed for large volume vortexing with sample weight up to 2.5lbs
- Wide range of accessories for tube sizes from 0.5-50mL and microplates
- Digital units display exact speed and time for critical applications



Applications: Animal/plant cell lysing, compound dissolving, Analytical chemistry

Model	Speed Range	Orbit	Controls	Duty Rating	Item No.
VXHDDG	On Mode 300 to 2500 rpm Touch Mode 300 to 3500 rpm	4.9 mm (0.19")	Digital	Continuous	30392146
VXHDAL	On Mode 300 to 2500 rpm Touch Mode 300 to 3500 rpm	4.9 mm (0.19")	Analog	Continuous	30392148

Vortex Mixers

Microplate Vortex Mixers

Dedicated Microplate Vortexer

- High-speed and small orbit design for effective mixing of microplates
- Accessories for one or two microplates and also cup head for tubes
- Digital units display exact speed and time for critical applications



Applications: PCR reaction mix prep, Metabolism assay, Reaction solution homogenization

Model	Speed Range	Orbit	Controls	Duty Rating	Item No.
VXMPDG	On Mode 300 to 2500 rpm Touch Mode 300 to 3500 rpm	3.5 mm (0.13")	Digital	Continuous	30392160
VXMPAL	On Mode 300 to 2500 rpm Touch Mode 300 to 3500 rpm	3.5 mm (0.13")	Analog	Continuous	30392162

Multi-Tube Vortex Mixers

Securely Holds Tubes for Walk-Away Vortexing

- Designed for high throughput vortexing applications
- Interchangeable foam racks accommodate popular 1.5, 15 and 50mL tubes
- Digital models have programmable pulse mode, creating a vigorous mix



Applications: HPLC sample prep, high-throughput laboratories, analytical chemistry

Model	Speed Range *	Orbit	Controls	Duty Rating	Item No.
VXMTAL	1200 to 2400 rpm	3.6 mm (0.14")	Analog	Continuous	30392164
VXMTDG	500 to 2500 rpm	3.6 mm (0.14")	Digital	Continuous	30392171

* Maximum speed will vary depending on load.

Vortex Mixer Accessories

- Wide range of accessories for most common tube sizes and microplates
- Durable stainless steel microtube holder for 12 tubes (pulsing models)
- Easily switch between accessories to streamline workflows



Heavy Duty Vortex Mixer Accessories

Accessories	Item No.
Foam insert for 0.5 mL microtubes	30400216
Foam insert for 1.5 to 2.0 mL microtubes	30400217
Foam insert for 12-13 mm test tubes	30400220
Foam insert for 15-18 mm test tubes	30400221
Foam insert for 19-21 mm test tubes	30400222
Foam insert for 22-25 mm test tubes	30400223
Foam insert for 26-29 mm test tubes	30400224
Flat Foam Insert	30400209
Large Vessel Holder	30400211
Microplate Single Holder	30400215
Microplate Double Holder	30400213
Microplate Quad Holder	30400214
Small Vessel Holder	30400218
Universal Holder	30400226
Universal Holder Cover	30400225
Stackable Microplate Holder	30400212

Multi-Tube Vortex Mixer Accessories

Accessories	Item No.
50 x 10 mm Test Tube Foam Rack	30400238
50 x 12 mm Test Tube Foam Rack	30400239
50 x 13 mm Test Tube Foam Rack	30400240
50 x 16 mm Test Tube Foam Rack (for 15 mL centrifuge tubes)	30400241
28 x 25 mm Test Tube Foam Rack	30400243
15 x 29 mm Test Tube Foam Rack (for 50 mL centrifuge tubes)	30400242
Replacement Tray Pad Set (upper & lower)	30400245
Post Extension Kit	30400244

Mini Vortex Mixer Accessories

Accessories	Item No.
Single Tube Holder	30400202
Cup Head	30400210
Cup Head	30400235
Micro-Tube Holder (0.5 mL)	30400204
Microtube Holder (1.5 mL to 2.0 mL)	30400205
9 to 13 mm Tube Holder (2 pack)	30400229
14 to 19 mm Tube Holder (2 pack)	30400230
20 to 25 mm Tube Holder (2 pack)	30400231
3" (7.6 cm) Rubber Head Cover	30400196
3" (7.6 cm) Head	30400236
3" (7.6 cm) Head with Rubber Cover	30400237
15 to 17 mm Ampule Tube Holder	30400207
10 to 17 mm Ampule Tube Holder	30400208
Adapter Plate For Vortex-Genie® Mixer	30400203
Flat Foam Insert (2 pack)	30400234
Insert Retainer	30400227
Foam Insert Variety Pack	30400201
Microplate Holder (2 pack)	30400233
Micro-Tube Holder (2 pack)	30400232
Micro-Tube & Microplate Holder Kit	30400198
Microtube Kit with /Retainer	30400200
Microwell Kit with Retainer	30400199
Rack For 30 X 0.5 mL Tube Block	30400250
Rack For 24X1.5 / 24X2.0 mL Tube Blocks	30400251
Cover For 0.5mL/1.5mL/2.0mL Tube Blocks	30400252
Microtube Holder	30400206
Vessel Harness (2 pack)	30400228
Tube Holder Kit	30400197

Dry Block Heaters

Dry Block Heaters

Large Selection of Economical Analog or Precise Digital Models to Choose From



- Dry incubation with ability to heat samples up to 150°C
- All models offer exceptional temperature uniformity of 0.1°C at 37°C
- Over 40 module blocks available with multiple hole size configurations

Dry Block Heaters

Precise and Versatile dry block heating

- 1, 2, 4 or 6 block models designed for low or high volume applications
- Temperature stability down to $\pm 1.0^{\circ}\text{C}$ and temp uniformity of 0.1°C
- Rugged painted steel housing offers many years of maintenance-free use
- Intuitive touchpad control options with independent LED's for temp and time



Applications: Western Blot, Protein denaturation, Endothermic reactions

Model	Temperature Range	Heat -Up Time to 100°C	Controls	Size	Item No.
HB1DG	Ambient $+5^{\circ}\text{C}$ to 120°C	≤ 16 minutes	Digital	1 block	30392059
HB2DG		≤ 16 minutes	Digital	2 block	30392080
HB4DG		≤ 23 minutes	Digital	4 block	30392087
HB6DG		≤ 30 minutes	Digital	6 block	30392094
HB1AL	Low Range:	≤ 16 minutes	Analog	1 block	30392045
HB2AL	Ambient $+5^{\circ}\text{C}$ to 100°C	≤ 16 minutes	Analog	2 block	30392052
HB4AL	High Range:	≤ 23 minutes	Analog	4 block	30392066
HB6AL	75°C to 150°C	≤ 30 minutes	Analog	6 block	30392073

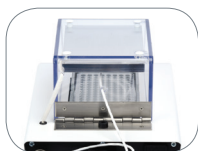
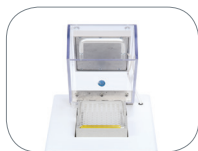
Dry Block Heater

2 Block Dry Block Heater with Lid

Heated Lid Dry Block Reduces Condensation on Sample Caps

- Designed for applications that require repeatable results
- Heated lid helps regulate temperature and reduce condensation
- Intuitive touchpad control with independent LED's for temp and time

Applications: High-throughput sample prep, Reagent preparation of temperature sensitive solutions



Model	Temperature Range	Heat-Up Time to 100°C	Controls	Size	Item No.
HB2DGHL	Ambient +5°C to 100°C	≤ 30 minutes	Digital	2 block	30392101

Dry Block Heater Accessories



- Wide range of accessories for most common tube sizes and microplates
- Durable stainless steel microtube holder for 12 tubes (pulsing models)
- Easily switch between accessories to streamline workflows



Accessories	Item No.
Test Tube Combination	30400156
Centrifuge Tube Combination	30400193
Micro-Tube Combination	30400194
12 x 15mL Conical Tube	30400172
5 x 50mL Conical Tube	30400168
2 x (12) 12.5 mm Cuvettes	30400161
2 Block Cover	30400179
4 Block Cover	30400180
6 Block Cover	30400181
30 x 0.5 mL Tube	30400157
20 x 1.5 mL Tube	30400159
20 x 1.5 mL Eppendorf™ Tube	30400162
20 x 2 mL Eppendorf™ Tube	30400191
20 x 2 mL Corning™ Tube	30400192
2 x 96-well PCR Plate	30400171
10 x 8 Tube Strips	30400169
64 x Individual PCR Tubes	30400170

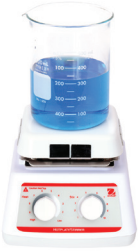
Dry Block Heater

Dry Block Heater Accessories

Accessories	Item No.
20 x 12 mm Vial	30400182
Solid Block, Single	30400160
Solid Block, Double	30400166
30 x 6 mm Tube	30400158
24 x 10 mm Tube	30400151
20 x 12/13 mm Tube	30400152
16 x 12/13 mm Tube	30400165
12 x 15/16 mm Tube	30400153
12 x 17/18 mm Tube	30400195
8 x 20 mm Tube	30400154
6 x 25 mm Tube	30400155
4 x 35 mm Tube	30400167
Sand Bath, 1 Block Dry Block Heater	30400173
Sand Bath, 2 Block Dry Block Heater	30400174
Sand Bath, 4 Block Dry Block Heater	30400175
Sand Bath, 6 Block Dry Block Heater	30400176
Sand, 1 lb (0.45 kg)	30400177
Stainless Steel Shot, 1 lb (0.45 kg)	30400178
Titer Plate	30400164
20 x 15 mm Vial	30400183
16 x 16 mm Vial	30400190
12 x 17 mm Vial	30400184
12 x 19 mm Vial	30400185
9 x 21 mm Vial	30400186
8 x 23 mm Vial	30400187
8 x 25 mm Vial	30400188
6 x 28 mm Vial	30400189

Hotplates & Stirrers

Compact Design Handles All Stirring and Heating Needs



- Compact design with high maximum temperature and stirring capabilities
- Easy-to-clean, chemical-resistant ceramic top plate with a reflective white surface
- Ideal for chemistry lab applications

Hotplates & Stirrers

Mini Hotplates & Stirrers

Compact Surface with Heating and Stirring Features

- Compact 4" x 4" top plate design ideal for education labs
- Ceramic top plate reaches maximum temperature of 500°C
- Stirring capacity up to 1000mL
- Support rod holder can be used to mount external thermometer
- Constructed of a heat and chemical-resistant housing



Applications: Chemical reactions, cell culture, ph meter support, temperature sensitive reactions, buffer prep (Tris/Non-tris)

Model	Speed Range	Temperature Range	Maximum Capacity (H ₂ O)	Function	Item No.
HSMNHP4CAL	N/A	to 500°C*	1000 mL	Heating	30392010
HSMNHP4CFT*	N/A	to 500°C*	1000 mL	Heating	30392031
HSMNST4CAL	100 to 1200 rpm	N/A	1000 mL	Stirring	30392017
HSMNAS4CAL**	100 to 1200 rpm	N/A	1000 mL	Stirring	30392038
HSMNHS4CAL	100 to 1200 rpm	to 500°C*	1000 mL	Heating and Stirring	30392024

HT Lysing Homogenizer Offering Customizable Sample Homogenization



- Rugged design for rapid High-Throughput Sample Processing
- Flexibility to process sample tubes, microplates and deep-well plates
- Intuitive control panel features five preset programs to quickly set speed and time

Bead Mill Homogenizers

HT Lysing Homogenizer

Produces Homogeneous Samples Quickly and Efficiently

- Designed to handle multiple tubes, microplates or deep-well plates
- High speed linear motion ideal for homogenizing mammalian cell tissue
- Intuitive controls with 5 preset programs optimized for speed and time

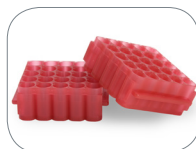
Applications: Cell Lysis, DNA isolation, protein extraction, High Throughput PCR sample prep



Model	Speed Range	Motion	Capacity	Maximum Capacity	Item No.
HOHTDG	300 to 1600 rpm (1 rpm increments)	Reciprocal, 31 mm	1 deep well plate, 4 microplates, or any sample matrix that can fit in the 10.2 × 12.7 × 6.4 cm adjustable holder	300 g	30391393

Bead Mill Accessories

- Convenient 2mL self-standing tubes with pre-measured grinding media
- Lysing tubes are color coded for specific sample types
- Pretreated to remove contaminants and certified Dnase/Rnase free



Accessories	Item No.
White, Bacteria, 2mL tube, 100/box	30391402
Yellow, Yeast, 2mL Tube, 100/box	30391404
Blue, Fungi, 2mL Tube, 100/box	30391405
Orange, Soft Sample, 2mL Tube, 100/box	30391406
Green, Plant, 2mL Tube, 100/box	30391408
Red, Animal Tissue, 2mL Tube, 100/box	30391409
Brown, Environmental, 2mL Tube, 100/box	30391410
Tube Rack, 25 x 2ml Tubes, 2 per pack	30391431
Sample Tube Kit, 14 Tubes	30391433

Clamps and Supports

Clamp It or Hold It - Labjaws Has it Covered



- An essential for all labs to handle glassware or other labware
- Offered in durable stainless steel or strong aluminum material
- Endless configurations to customize any lab space

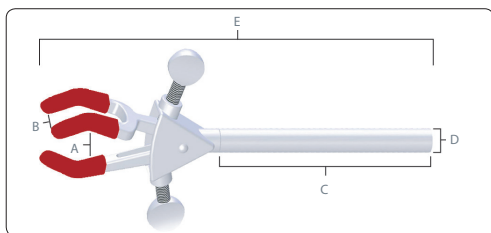
Multi-Purpose Clamps

Flexible Configurations to Hold Just About Anything in the Lab

- Designed to securely grip and position glassware and lab apparatus
- Available as single or dual-adjust in zinc or stainless steel
- Non-slip vinyl sleeves and fiberglass covers for temps above 100°C



Applications: Esterification, fermentation, Redox reactions, Endo and Exothermic reactions, General Chemistry based reactions



Ground Glass Joint Reference Chart

Clamp	Joint Size
Small Dual Adjust	10/30, 12/30, 14/20, 19/22, 24/40, 29/42, 34/45
Medium Dual Adjust	14/40, 19/38
Large Dual Adjust	45/50

3-Prong Single Adjust Clamps

Size	(A) Min. to Max Grip Size	(B) Prong Width	(C) Arm Length	(D) Arm Dia.	(E) Overall Length	Item No.
Small	0 to 23 mm (0 to 0.91")	6 mm (0.24")	102 mm (4")	8 mm (0.32")	162 mm (6.38")	30392254
Medium	0 to 50 mm (0 to 1.97")	19 mm (0.75")	127 mm (5")	11 mm (0.43")	229 mm (9.02")	30392252
Large	0 to 72 mm (0 to 2.83")	29 mm (1.14")	127 mm (5")	11 mm (0.43")	260 mm (10.24")	30392250

Heavy-Duty Tapered Clamps

Size	Joint Size	Prong Width	Arm Length	Arm Dia.	Overall Length	Item No.
Small	24/40 mm	16 mm (0.63")	229 mm (9.02")	13 mm (0.51")	356 mm (14")	30392193
Large	34/45 mm	19 mm (0.75")	229 mm (9.02")	13 mm (0.51")	381 mm (15")	30392194

Multi-Purpose Clamps

3-Prong Stainless Steel Dual Adjust Clamps

Size	(A) Min. to Max Grip Size	(B) Prong Width	(C) Arm Length	(D) Arm Dia.	(E) Overall Length	Item No.
Small	0 to 48 mm (0 to 1.9")	13 mm (0.51")	102 mm (4")	10 mm (0.39")	172 mm (6.77")	30392354
Medium	0 to 69 mm (0 to 2.72")	19 mm (0.75")	127 mm (5")	13 mm (0.51")	229 mm (9.02")	30392353
Large	0 to 102 mm (0 to 4")	29 mm (1.14")	127 mm (5")	13 mm (0.51")	273 mm (10.75")	30392352

3-Prong Single Adjust Clamps

Size	(A) Min. to Max Grip Size	(B) Prong Width	(C) Arm Length	(D) Arm Dia.	(E) Overall Length	Item No.
Small	0 to 39 mm (0 to 1.54")	11 mm (0.43")	102 mm (4")	8 mm (0.32")	160 mm (6.3")	30392205
Medium	0 to 71 mm (0 to 2.8")	19 mm (0.75")	127 mm (5")	11 mm (0.43")	218 mm (8.58")	30392203
Large	0 to 108 mm (0 to 4.25")	29 mm (1.14")	127 mm (5")	11 mm (0.43")	248 mm (9.76")	30392200

3-Prong Dual Adjust Clamps

Size	(A) Min. to Max Grip Size	(B) Prong Width	(C) Arm Length	(D) Arm Dia.	(E) Overall Length	Item No.
Small	0 to 46 mm (0 to 1.81")	11 mm (0.43")	102 mm (4")	8 mm (0.32")	168 mm (6.61")	30392204
Medium	0 to 69 mm (0 to 2.72")	19 mm (0.75")	127 mm (5")	11 mm (0.43")	229 mm (9.02")	30392201
Medium (extended)	0 to 69 mm (0 to 2.72")	19 mm (0.75")	305 mm (12")	13 mm (0.5")	406 mm (16")	30392202
Large	0 to 105 mm (0 to 4.13")	29 mm (1.14")	127 mm (5")	11 mm (0.43")	273 mm (10.75")	30392198
Large (extended)	0 to 105 mm (0 to 4.13")	29 mm (1.14")	305 mm (12")	13 mm (0.5")	451 mm (17.76")	30392199

2-Prong Single Adjust Clamps

Material	Size	(A) Min. to Max Grip Size	(B) Prong Width	(C) Arm Length	(D) Arm Dia.	(E) Overall Length	Item No.
Nickel-plated zinc	Medium	0 to 78 mm (0 to 3.07")	23 mm (0.91")	127 mm (5")	11 mm (0.43")	216 mm (8.5")	30392208
Nickel-plated zinc	Large	0 to 92 mm (0 to 3.62")	23 mm (0.91")	127 mm (5")	11 mm (0.43")	229 mm (9.02")	30392206

Multi-Purpose Clamps

2-Prong Dual Adjust Clamps

Material	Size	(A) Min. to Max Grip Size	(B) Prong Width	(C) Arm Length	(D) Arm Dia.	(E) Overall Length	Item No.
Stainless steel	Medium	0 to 75 mm (0 to 2.95")	23 mm (0.91")	127 mm (5")	11 mm (0.43")	229 mm (9.02")	30392220
Nickel-plated zinc	Medium	0 to 75 mm (0 to 2.95")	23 mm (0.91")	127 mm (5")	11 mm (0.43")	229 mm (9.02")	30392209
Stainless steel	Large	0 to 95 mm (0 to 3.74")	23 mm (0.91")	127 mm (5")	11 mm (0.43")	248 mm (9.76")	30392223
Nickel-plated zinc	Large	0 to 95 mm (0 to 3.74")	23 mm (0.91")	127 mm (5")	11 mm (0.43")	248 mm (9.76")	30392207

Swivel Clamps

Material	Description	Size	Min. to Max. Grip Size	Prong Width	Overall Length	Item No.
Stainless steel	2-Prong Single Adjust	Medium	0 to 77 mm (0 to 3.03")	23 mm (0.91")	133 mm (5.24")	30392230
Nickel-plated zinc	2-Prong Single Adjust	Medium	0 to 77 mm (0 to 3.03")	23 mm (0.91")	133 mm (5.24")	30392218
Stainless steel	3-Prong Dual Adjust	Medium	0 to 69 mm (0 to 2.72")	20 mm (0.79")	146 mm (5.75")	30392229
Nickel-plated zinc	3-Prong Dual Adjust	Medium	0 to 69 mm (0 to 2.72")	20 mm (0.79")	146 mm (5.75")	30392217

Swivel Clamps

Material	Description	Size	Min. to Max. Grip Size	Prong Width	Overall Length	Item No.
Stainless steel	2-Prong Single Adjust	Medium	0 to 77 mm (0 to 3.03")	23 mm (0.91")	133 mm (5.24")	30392230
Nickel-plated zinc	2-Prong Single Adjust	Medium	0 to 77 mm (0 to 3.03")	23 mm (0.91")	133 mm (5.24")	30392218
Stainless steel	3-Prong Dual Adjust	Medium	0 to 69 mm (0 to 2.72")	20 mm (0.79")	146 mm (5.75")	30392229
Nickel-plated zinc	3-Prong Dual Adjust	Medium	0 to 69 mm (0 to 2.72")	20 mm (0.79")	146 mm (5.75")	30392217

Specialty Clamps

- Swivel and extension designs to hold glass tubes and thermometers
- Chain clamps designed to hold round or irregular shaped objects
- Wall and bath clamps easily mount where no frames exist



Thermometer Swivel Clamp

Min. to Max. Grip Size	Overall Length	Item No.
6 to 8 mm (0.24 to 0.32")	159 mm (6.26")	30392238

Thermometer / Thermocouple Extension Clamp

Min. to Max. Grip Size	Ext Arm Length	Arm Dia.	Overall Length	Item No.
6 to 12 mm (0.24 to 0.47")	127 mm (5")	11 mm (0.43")	210 mm (8.27")	30392239

Wall Clamp

Min. to Max. Grip Size	Overall Length	Item No.
5 to 10 mm (0.2 to 0.39")	80 mm (3.15")	30392244

Water Bath Clamps

Size	Min. to Max. Grip Size	Prong Width	Overall Length	Item No.
Small	5 to 10 mm (0.2 to 0.39")	N/A	89 mm (3.5")	30392240
Large	0 to 46 mm (0 to 1.81")	11 mm (0.43")	117 mm (4.61")	30392241

Specialty Clamps

Chain Clamps

Stainless Steel

Size	Min. to Max. Dia.	Ext. Arm Length	Arm Dia.	Overall Length	Item No.
Large-5	35 to 280 mm (1.38 to 11.02")	127 mm (5")	13 mm (0.51")	206 mm (8.11")	30392224

Nickel-Plated Zinc

Size	Min. to Max. Dia.	Ext. Arm Length	Arm Dia.	Overall Length	Item No.
Small	35 to 170 mm (1.38 to 6.69")	127 mm (5")	13 mm (0.51")	188 mm (7.4")	30392235
Large-5	35 to 280 mm (1.38 to 11.02")	127 mm (5")	13 mm (0.51")	206 mm (8.11")	30392259
Large-12	35 to 280 mm (1.38 to 11.02")	305 mm (12")	13 mm (0.51")	384 mm (15.12")	30392260

Column Clamps

Size	Min. to Max. Dia.	Ext. Arm Length	Arm Dia.	Overall Length	Item No.
Small	65 to 89 mm (2.56 to 3.5")	211 mm (8.31")	11 mm (0.43")	282 mm (11.1")	30392314
Medium	91 to 114 mm (3.58 to 4.49")	211 mm (8.31")	11 mm (0.43")	315 mm (12.4")	30392315
Large	64 to 140 mm (2.52 to 5.51")	211 mm (8.31")	11 mm (0.43")	338 mm (13.31")	30392316
X-Large	92 to 165 mm (3.62 to 6.5")	211 mm (8.31")	11 mm (0.43")	368 mm (14.49")	30392317

Nester Extension Clamps

Min. to Max. Dia.	Ext. Arm Length	Arm Dia.	Overall Length	Item No.
50 to 102 mm (1.97 to 4")	152 mm (5.98")	10 mm (0.39")	262 mm (10.32")	30392318

Specialty Clamps

PVC Coated Open Extension Rings

Ring Dia.	Ext. Arm Length	Arm Dia.	Overall Length	Item No.
76 mm (3")	254 mm (10")	9 mm (0.35")	328 mm (12.91")	30392346
102 mm (4")	305 mm (12")	9 mm (0.35")	404 mm (15.91")	30392347
127 mm (5")	305 mm (12")	11 mm (0.43")	427 mm (16.81")	30392348

Open Rings

Ring Dia.	Ext. Arm Length	Arm Dia.	Overall Length	Item No.
76 mm (3")	58 mm (2.28")	9 mm (0.35")	132 mm (5.2")	30392343
102 mm (4")	58 mm (2.28")	9 mm (0.35")	158 mm (6.22")	30392344
127 mm (5")	61 mm (2.4")	11 mm (0.43")	183 mm (7.2")	30392345

Buret Holders

Stainless Steel

Description	Item No.
Double Buret Clamp (only)	30392227
Support Rod (only)	30392233
Support Stand with Rod	30392232
Double Buret Clamp & Support Stand with Rod (complete)	30392231

Nickel-Plated Zinc

Description	Item No.
Double Buret Clamp (only)	30392234
Support Stand with Rod	30392312
Double Buret Clamp & Support Stand with Rod (complete)	30392313

Kettle Clamps

Flask Size	Inside Dia.	Item No.
500 mL, 1000 mL	125 mm (4.92")	30392365
2000 mL, 3000 mL, 4000 mL	142 mm (5.59")	30392366

Specialty Clamps

Electrode Support Clamp

Overall Length	Item No.
178 mm (7")	30392242

Suspension Clamp

Overall Length	Item No.
137 mm (5.39")	30392243

Support Clamp

Overall Length	Prong Width	Item No.
152 mm (5.99")	25 mm (1")	30392237

Arm Length	Ultra Flex 12 Ultra Flex 18	305 mm (12") 457 mm (18")
Arm Diameter		13 mm (0.51")
Max. Grip Size	2-Prong Clamp Head 3-Prong Clamp Head Spring Clamp Head	75 mm (2.95") 69 mm (2.72") 13 mm (0.51")

Ultra Flex Support System with Base Plate

Description	Item No.
Ultra Flex 12 with Base Plate	30400011
Ultra Flex 18 with Base Plate	30400014

Ultra Flex Support System with Lab-Frame Connector

Description	Item No.
Ultra Flex 12 with Lab-Frame Connector	30400013
Ultra Flex 18 with Lab-Frame Connector	30400016

Ultra Flex Support System with Bench Clamp

Description	Item No.
Ultra Flex 12 with Bench Clamp	30400012
Ultra Flex 18 with Bench Clamp	30400015

Specialty Clamps

Bench Clamp

Clamp Opening	Depth of Grip	Overall Length	Item No.
1.7" (43 mm)	2" (51 mm)	7.75" (197 mm)	30392311

Thumbscrew Knob

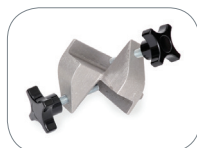
Overall Diameter	Thumbscrew Slot	Item No.
64 mm (2.5")	32 mm (1.25")	30392192

Double Jaw Utility Clamp

Description	Min. to Max. Grip Size	Prong Width	Overall Length	Item No.
Medium 2-Prong	0 to 76 mm (0 to 3")	23 mm (0.91")	222 mm (8.74")	30392236

Connectors & Holders

- Designed to securely grip and position glassware and lab apparatus
- Available as single or dual-adjust in zinc or stainless steel
- Non-slip vinyl sleeves and fiberglass covers for temps above 100°C



Applications: Esterification, fermentation, Redox reactions, Endo and Exothermic reactions, General Chemistry based reactions

Regular Holder

Material	Min. to Max. Grip Size	Item No.
Stainless steel	0 to 18 mm (0 to 0.71")	30392219
Nickel-plated zinc	0 to 18 mm (0 to 0.71")	30392197

Jumbo Holder

Material	Min. to Max. Grip Size	Item No.
Stainless steel	0 to 21 mm (0 to 0.83")	30392357
Aluminum	0 to 21 mm (0 to 0.83")	30392196

Heavy-Duty Holder

Material	Min. to Max. Grip Size	Item No.
Aluminum	6 to 24 mm (0.24 to 0.95")	30400045

Swivel Holder

Material	Min. to Max. Grip Size	Item No.
Stainless steel	0 to 19 mm (0 to 0.75")	30392228
Nickel-plated zinc	0 to 19 mm (0 to 0.75")	30392213

All-Position Clamp Holder

Material	Min. to Max. Grip Size	Item No.
Nickel-plated zinc	0 to 19 mm (0 to 0.75")	30392248

Connectors & Holders

Clamp Holder

Material	Min. to Max. Grip Size	Overall Length	Item No.
Aluminum	0 to 17 mm (0 to 0.66")	70 mm (2.75")	30392195

Hook Connector

Material	Min. to Max. Grip Size	Item No.
Stainless steel	0 to 13 mm (0 to 0.51")	30392358
Nickel-plated zinc	0 to 13 mm (0 to 0.51")	30392258

End-to-End Connector

Material	Min. to Max. Grip Size	Item No.
Aluminum	0 to 13 mm (0 to 0.51")	30392264

Rod End Connector

Material	Min. to Max. Grip Size	Item No.
Stainless steel	0 to 13 mm (0 to 0.51")	30392222
Nickel-plated zinc	0 to 13 mm (0 to 0.51")	30392256

S-Connector

Material	Min. to Max. Grip Size	Item No.
Stainless steel	0 to 13 mm (0 to 0.51")	30392355
Nickel-plated zinc	0 to 13 mm (0 to 0.51")	30392257

Frame Connector (Pack of 12)

Material	Min. to Max. Grip Size	Item No.
Aluminum	0 to 13 mm (0 to 0.51")	30392255

Connectors & Holders

Universal Stirrer Mounting Bracket

Max. Weight Mounted	Min. to Max. Grip Size	Item No.
2.27 kg (5 lbs)	0 to 20 mm (0 to 0.78")	30392265

Multi-Rod Connector

Min. to Max. Rod Size	Item No.
0 to 13 mm (0 to 0.51")	30392262

Wrench

Length	Item No.
79 mm (3.11")	30392270

Channel Connector

Dimensions	Item No.
33 × 40 mm (1.3 × 1.58")	30392261

Horizontal Mounting Bars with Coupler

Bar Length	Item No.
51 mm (2")	30392266
102 mm (4")	30392267
152 mm (6")	30392268
203 mm (8")	30392269

Rods, Frames and Supports



- Adjustable lab-lifts provide stable height adjustment for lab apparatus
- Fume hood kits available in 4, 5, 6 or 8 foot lengths
- Support stands with "U" base balances weight and prevents tipping



Lab Frame Foot

Material	Min. to Max. Grip Size	Dimensions (Dia. × H)	Item No.
Stainless steel	0 to 0.51" (0 to 13 mm)	2.3 × 1.25" (58 × 32 mm)	30392356
Nickel-plated zinc	0 to 0.51" (0 to 13 mm)	2.3 × 1.25" (58 × 32 mm)	30392263

Frame Rods

Material	Rod Diameter	Rod Length	Item No.
Stainless Steel	0.51" (13 mm)	1.61" (41 mm)	30392293
Stainless Steel	0.51" (13 mm)	2" (51 mm)	30392294
Stainless Steel	0.51" (13 mm)	6" (152 mm)	30392295
Stainless Steel	0.51" (13 mm)	12" (305 mm)	30392296
Stainless Steel	0.51" (13 mm)	18" (457 mm)	30392297
Stainless Steel	0.51" (13 mm)	24" (610 mm)	30392298
Stainless Steel	0.51" (13 mm)	36" (914 mm)	30392299
Stainless Steel	0.51" (13 mm)	48" (1219 mm)	30392300
Stainless Steel	0.51" (13 mm)	60" (1524 mm)	30392301
Stainless Steel	0.51" (13 mm)	72" (1829 mm)	30392302
Stainless Steel	0.51" (13 mm)	96" (2438 mm)	30392303
Aluminum	0.51" (13 mm)	1.61" (41 mm)	30392271
Aluminum	0.51" (13 mm)	2" (51 mm)	30392272
Aluminum	0.51" (13 mm)	6" (152 mm)	30392273
Aluminum	0.51" (13 mm)	12" (305 mm)	30392274
Aluminum	0.51" (13 mm)	18" (457 mm)	30392275
Aluminum	0.51" (13 mm)	24" (610 mm)	30392276
Aluminum	0.51" (13 mm)	36" (914 mm)	30392277
Aluminum	0.51" (13 mm)	48" (1219 mm)	30392278
Aluminum	0.51" (13 mm)	60" (1524 mm)	30392279
Aluminum	0.51" (13 mm)	72" (1829 mm)	30392280
Aluminum	0.51" (13 mm)	96" (2438 mm)	30392281

Rods, Frames and Supports

Small Lab-Frame

Material	Frame Dimensions	Base Dimensions	Item No.
Stainless Steel	24 × 24" (610 × 610 mm)	18" (457 mm) wide	30392323
Aluminum	24 × 24" (610 × 610 mm)	18" (457 mm) wide	30392304

Medium Lab-Frame

Material	Frame Dimensions	Base Dimensions	Item No.
Stainless Steel	24 × 48" (610 × 1219 mm)	18" (457 mm) wide	30392324
Aluminum	24 × 48" (610 × 1219 mm)	18" (457 mm) wide	30392305

Large Lab-Frame

Material	Frame Dimensions	Base Dimensions	Item No.
Stainless Steel	48 × 48" (1219 × 1219 mm)	18" (457 mm) wide	30392325
Aluminum	48 × 48" (1219 × 1219 mm)	18" (457 mm) wide	30392306

Extra-Large Lab-Frame

Material	Frame Dimensions	Item No.
Stainless Steel	48 × 72" (1219 × 1829 mm)	30392326
Aluminum	48 × 72" (1219 × 1829 mm)	30392307

Heavy-Duty Lab-Frame

Material	Frame Dimensions	Overall Dimensions	Item No.
Stainless Steel	48 × 72" (1219 × 1829 mm)	75 × 72" (1905 × 1829 mm)	30392328
Aluminum	48 × 72" (1219 × 1829 mm)	75 × 72" (1905 × 1829 mm)	30392309

Fume Hood Kits

Size	Frame Dimensions	Base Dimensions	Item No.
4' (1.22 m)	36 × 38" (914 × 965 mm)	12" (305 mm) wide	30392329
5' (1.52 m)	36 × 50" (914 × 1270 mm)	12" (305 mm) wide	30392330
6' (1.83 m)	36 × 62" (914 × 1575 mm)	12" (305 mm) wide	30392331
8' (2.44 m)	36 × 86" (914 × 2184 mm)	12" (305 mm) wide	30392332

Support Stands

Description	Item No.
Support Stand with 23" (584 mm) Rod	30400030
Support Stand with 28" (711 mm) Rod	30400031
Support Stand with 36" (914 mm) Rod	30400032
Support Stand with 40" (1016 mm) Rod	30400033
Support Stand with 48" (1219 mm) Rod	30400034
Support Stand with 60" (1524 mm) Rod	30400035

Rods, Frames and Supports

Support Stand Stabilizer Knobs

Description	Item No.
Support Stand Stabilizer Knobs (2 per pack)	30400044

Heavy-Duty Support Stands

Description	Item No.
Heavy-Duty Support Stand with 18" (457 mm) Rod	30392334
Heavy-Duty Support Stand with 23" (584 mm) Rod	30392335
Heavy-Duty Support Stand with 28" (711 mm) Rod	30392336
Heavy-Duty Support Stand with 36" (914 mm) Rod	30392337
Heavy-Duty Support Stand with 40" (1016 mm) Rod	30392338
Heavy-Duty Support Stand with 48" (1219 mm) Rod	30392339
Heavy-Duty Support Stand with 60" (1524 mm) Rod	30392340

Replacement Support Rods

Description	Diameter	Item No.
18" (457 mm) Stainless Steel Rod	0.63" (16 mm)	30400036
23" (584 mm) Stainless Steel Rod	0.63" (16 mm)	30400037
28" (711 mm) Stainless Steel Rod	0.63" (16 mm)	30400038
36" (914 mm) Stainless Steel Rod	0.63" (16 mm)	30400039
40" (1016 mm) Stainless Steel Rod	0.63" (16 mm)	30400040
48" (1219 mm) Stainless Steel Rod	0.63" (16 mm)	30400041
60" (1524 mm) Stainless Steel Rod	0.63" (16 mm)	30400042

Rectangular Base Support Stand, Cast Iron

Description	Dimensions	Item No.
Rectangular Base (only)	4 × 6" (102 × 152 mm)	30392359
Rectangular Base (only)	5 × 8" (127 × 203 mm)	30392360
Rectangular Base (only)	6 × 9" (152 × 229 mm)	30392361
Rectangular Base (only)	8 × 10" (203 × 254 mm)	30392362

Tripod Base Support Stand, Cast Iron

Description	Overall Footprint Diameter	Item No.
Tripod Base (only)	14.75" (375 mm)	30392363

Rods, Frames and Supports

U-Shaped Base Support Stand, Cast Iron

Description	Dimensions	Item No.
U-Shaped Base (only)	7 × 7" (178 × 178 mm)	30392364

Aluminum Support Rods

Description	Diameter	Item No.
12" (305 mm) Aluminum Rod	0.51" (13 mm)	30392274
18" (457 mm) Aluminum Rod	0.51" (13 mm)	30392275
24" (610 mm) Aluminum Rod	0.51" (13 mm)	30392276
36" (914 mm) Aluminum Rod	0.51" (13 mm)	30392277

Stainless Steel Support Rods

Description	Diameter	Item No.
12" (305 mm) Stainless Steel Rod	0.51" (13 mm)	30392296
18" (457 mm) Stainless Steel Rod	0.51" (13 mm)	30392297
24" (610 mm) Stainless Steel Rod	0.51" (13 mm)	30392298
36" (914 mm) Stainless Steel Rod	0.51" (13 mm)	30392299

Round Support Plate

Description	Distance from Rod	Item No.
6" (152 mm)	2.6" (66 mm)	30392342

Support Plates

Size	Plate Dimensions	Distance from Rod	Item No.
Small	9.5 × 6.5" (241 × 165 mm)	1.9" (48 mm)	30392349
Medium	12.75 × 9" (324 × 229 mm)	1.9" (48 mm)	30392350
Large	15.75 × 12" (400 × 305 mm)	1.9" (48 mm)	30392351

OHAUS Aluminum Lab-Lifts

Deck Size	Min. to Max. Height	Max. Load*	Item No.
4 × 4" (102 × 102 mm)	2.5 to 5" (64 to 127 mm)	66 lbs (29.94 kg)	30400007
6 × 6" (152 × 152 mm)	3 to 9.75" (76 to 248 mm)	132 lbs (59.87 kg)	30400008
8 × 8" (203 × 203 mm)	3 to 9.75" (76 to 248 mm)	176 lbs (79.83 kg)	30400009
10 × 10" (254 × 254 mm)	3.5 to 13" (89 to 330 mm)	186 lbs (84.37 kg)	30400010

*NOTE: Maximum load rating represents static weight only. Static weight is the amount a unit can hold, not lift.

Rods, Frames and Supports

17" Support Rod Kit

Description	Rod Diameter	Item No.
17" Support Rod Kit	0.51" (13 mm)	30400050

OHAUS Heavy-Duty Lab-Lifts

Deck Size	Min. to Max. Height	Max. Load*	Item No.
3 × 3" (76 × 76 mm)	2.5 to 5" (64 to 127 mm)	100 lbs (45.36 kg)	30400000
4 × 4" (102 × 102 mm)	2.5 to 5" (64 to 127 mm)	100 lbs (45.36 kg)	30400001
6 × 6" (152 × 152 mm)	3 to 9.75" (76 to 248 mm)	133 lbs (60.33 kg)	30400002
8 × 8" (203 × 203 mm)	3 to 9.75" (76 to 248 mm)	227 lbs (102.97 kg)	30400003
10 × 10" (254 × 254 mm)	3.5 to 13" (89 to 330 mm)	247 lbs (112.04 kg)	30400004
12 × 12" (305 × 305 mm)	4 to 19.5" (102 to 495 mm)	100 lbs (45.36 kg)	30400005
16 × 16" (406 × 406 mm)	4 to 19.5" (102 to 495 mm)	100 lbs (45.36 kg)	30400006

Ratchet Tool

Description	Item No.
Ratchet Tool	30400049

Cylinder Bench Clamps

Description	Dimensions L × W × H (closed)	Cylinder Diameter	Item No.
Model 711 Bench Clamp with Strap	3.25 × 5.25 × 6.5" (83 × 133 × 165 mm)	4 to 14" (102 to 356 mm)	30400020
Model 711 Bench Clamp with Safety Message Strap	3.25 × 5.25 × 6.5" (83 × 133 × 165 mm)	4 to 14" (102 to 356 mm)	30400021
Model 716 Bench Clamp with Strap & Chain	3.25 × 5.25 × 6.5" (83 × 133 × 165 mm)	4 to 14" (102 to 356 mm)	30400026
Model 716 Bench Clamp with Safety Message Strap & Chain	3.25 × 5.25 × 6.5" (83 × 133 × 165 mm)	4 to 14" (102 to 356 mm)	30400027
Model 712 Heavy-Duty Bench Clamp with Strap	3.25 × 6 × 4.5" (83 × 152 × 114 mm)	4 to 14" (102 to 356 mm)	30400022

Cylinder Wall Brackets

Description	Dimensions L × W × H (closed)	Cylinder Diameter	Item No.
Model 715 Wall Bracket with Strap	1.88 × 8.13 × 4.63" (48 × 206 × 118 mm)	4 to 14" (102 to 356 mm)	30400024
Model 715 Wall Bracket with Safety Message Strap	1.88 × 8.13 × 4.63" (48 × 206 × 118 mm)	4 to 14" (102 to 356 mm)	30400025
Model 717 Wall Bracket with Strap & Chain	1.88 × 8.13 × 4.63" (48 × 206 × 118 mm)	4 to 14" (102 to 356 mm)	30400028
Model 717 Wall Bracket with Safety Message Strap & Chain	1.88 × 8.13 × 4.63" (48 × 206 × 118 mm)	4 to 14" (102 to 356 mm)	30400029

Rods, Frames and Supports

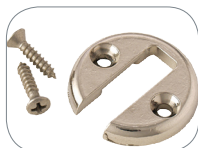
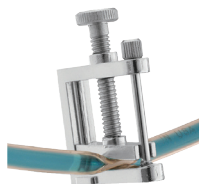
Stands

Description	Dimensions L x W x H	Cylinder Diameter	Item No.
Model 701 PVC Coated Stand	17.25 x 17.25 x 10.75" (438 x 438 x 273 mm)	7 to 10" (178 x 254 mm)	30400017
Model 703 Stand	18.25 x 6" (464 x 152 mm)	8 to 9" (203 x 229 mm)	30400018
Model 704 Adjustable Stand	18.5 x 7.5" (470 x 191 mm)	6 to 9.25" (152 x 235 mm)	30400019
Model 713 Portable Stand	15.5 x 3" (394 x 76 mm)	7 to 9.25" (178 x 235 mm)	30400023

LabJaws Clamps and Supports

Flow Control Clamps

- Designed to deliver accurate regulation of fluid control
- Nickel-plated construction resists corrosion or rust
- Simple and accurate regulation with large-headed adjustment screw



Regular Hosecock

Nickel-Plated Zinc

Min. to Max. Grip	Dimensions (W × H - open)	Item No.
0 to 17 mm (0 to 0.67")	37 × 62 mm (1.46 × 2.44")	30392211

Nickel-Plated Zinc

Min. to Max. Grip	Dimensions (W × H - open)	Item No.
0 to 17 mm (0 to 0.67")	37 × 62 mm (1.46 × 2.44")	30392210

Heavy-Duty Hosecock

Min. to Max. Grip	Dimensions (W × H - open)	Item No.
0 to 29 mm (0 to 1.14")	57 × 106 mm (2.24 × 4.17")	30392310

Hosecock Extension Clamp

Min. to Max. Grip	Arm Length	Arm Dia.	Overall Length	Item No.
0 to 17 mm (0 to 0.67")	145 mm (5.71")	8 mm (0.32")	175 mm (6.89")	30392212

Hosecock Foot

Diameter	Item No.
27 mm (1.06")	30392211

Regular Pinchcock

Min. to Max. Grip	Clamp Height	Item No.
0 to 12 mm (0 to 0.47")	47 mm (1.85")	30392245

Variable Flow Pinchcock

Min. to Max. Grip	Clamp Height	Item No.
0 to 13 mm (0 to 0.51")	47 mm (1.85")	30392247

Flow Control Clamps

Heavy-Duty Pinchcock

Min. to Max. Grip	Clamp Height	Item No.
0 to 11 mm (0 to 0.43")	48 mm (1.89")	30392246

Misc. Non-Electrical Products

- inoculating turn tables accommodate standard petri dish sizes
- Slide staining racks adjustable to fit trays or sinks up to 21" wide
- Airjectors with tapered connector designed for rapid air removal



Inoculating Turntables

Description	Dimensions (Dia. × H)	Item No.
Small Turntable	4.49 × 3.03" (114 × 77 mm)	30400046
Large Turntable	5.91 × 1.26" (150 × 32 mm)	30400047

Slide Staining Rack

Description	Dimensions (L × W)	Item No.
Slide Staining Rack	23.74 × 3.5" (603 × 89 mm)	30400048

Airejector

Description	Length	Item No.
Airejector	5.51" (140 mm)	30392367

Starter Meters

Precise and accurate pH monitoring



- Configured for water analysis in laboratory, industrial or field applications
- Intuitive software and controls allow for ease of operation with all models
- Sturdy and durable electrodes provide precise and reliable measurements

Starter Bench Meters

Sophisticated Universal pH Bench Meter

- High Performance Bench Meter for Universal pH Applications
- pH measurement range of -2.00 – 20.00
- Large color touchscreen for simple programming and reading of values



Applications: Buffer creation, pH optimization, Cell culture Media prep

Model	Included Electrode	Measurement Range	Measurement Resolution	Item No.
ST5000-B	N/A	-2.00 to 20.00 pH; -2000.00 to +2000.00 ; mV-30 to 130°C	0.001 pH; 0.01 mV; 0.1 °C	30129895
ST5000-F	ST350			30129896
ST3100-F	ST310	-2.00 to 16.00 pH ; -1999 to 1999 mV; -5 °C to 110 °C	0.01 pH; 0.1 °C; 1 mV	30058489
ST2100-F	ST210, STTEMP30			30057496

Starter Portable Meters

Accurate pH Measurements Anywhere Your Job Takes You

- Convenient Portable meter ideal for field or other remote applications
- pH measurement range of 0.00 – 14.00
- Long battery life of approximately 500 hours

Applications: Environmental laboratories, solution pH verification



Model	Included Electrode	Measurement Range	Measurement Resolution	Item No.
ST300	ST320	0.00 to 14.00 pH; -1999 to 1999 mV ; 0 to 100 °C	0.01 pH ; 1 mV ; 0.1 °C	83033961

Starter Pen Meters

Economical and Convenient pH Meters

- Designed as an economical option for accurate pH measurement
- pH measurement range of 0.00 – 14
- Fully waterproof IP 67 rated

Applications: pH verification of sensitive solutions, Water analysis



Model	Meter Type	Measurement Range	Measurement Resolution	Temperature Display	Item No.
ST10	pH	0.00 – 14 pH	0.1 pH	Not Available	30073970
ST20		0.00 – 14 pH ; 0.0 – 99.0 °C	0.01 pH	Yes	30073971
ST20M-B	Multi	0.00 – 14pH, 0 – 1999 µS/cm, 0.0 – 1000 mg/L, 0.0 – 99.0 °C	0.01pH, 1µS/cm, 1 mg/L, 0.1°C	Yes	30393199
ST20M-C		0.00 – 14 pH, 0 – 19.99 mS/cm, 0.0 – 10.0 ppt, 0-99.0°C	0.01pH, 0.01mS/cm, 0.1 ppt, 0.1°C	Yes	30393200
ST10S	Salinity	0.0 – 10.0 ppt	0.1 ppt	Not Available	30073982
ST20S		0.0 – 80.0 ppt; 0.0 – 99.0 °C		Yes	30073983
ST10R	ORP	-1000 – 1000 mV	1 mV	Not Available	30073984
ST20R		-1000 – 1000 mV; 0.0 – 99.0 °C		Yes	30073985

Laboratory Instrument Accessories

- Constructed of either plastic or glass shafts to withstand daily use
- Include a temperature sensor, ensuring accurate measurements
- Designed to conveniently fit OHAUS electrode holders and clips



Accessories	Item No.
Pen Meter Electrode pH10 ST	30087992
Pen Meter Electrode pH20 ST	30087993
Pen Meter Electrode ST20M-B	30393203
Pen Meter Electrode ST20M-C	30393204
Pen Meter Electrode CT10A ST	30087994
Pen Meter Electrode CT10B ST	30087995
Pen Meter Electrode CS10C ST	30087996
Pen Meter Electrode CT20A ST	30087997
Pen Meter Electrode CT20B ST	30087998
Pen Meter Electrode CS20C ST	30087999
Pen Meter Electrode R10 ST	30088020
Pen Meter Electrode R20 ST	30088021
Pen Meter Electrode ST20D	30222083
pH electrolyte (KCl saturated AgCl, 30ml)	30059255
pH electrode protection solution(3M KCl)	30059256
pH sensor protect bottle(10 in bag)	30064800
Zero Oxygen Chemicals, STARTER	30059257
Buffer pH1.68 250 ml	30100424
Buffer pH4.01 250 ml	30100425
Buffer pH6.86 250 ml	30100426
Buffer pH7.00 250 ml	30100427
Buffer pH9.18 250 ml	30100428
Buffer pH10.01 250 ml	30100429
Buffer pH12.45 250 ml	30100440
Standard Conduct 10 μ S/cm 250 ml	30100441
Standard Conduct 84 μ S/cm 250 ml	30100442
Standard Conduct 1413 μ S/cm 250 ml	30100443
Standard Conduct 12.88 mS/cm 250 ml	30100444
Buffer Powder pH4.01; 7.00; 10.01	83033971



OHAUS Corporation

Headquartered in Parsippany, NJ, OHAUS Corporation manufactures an extensive line of high-precision electronic and mechanical balances and scales that meet the weighing needs of virtually every industry. We are a global leader in the laboratory, industrial, and education channels as well as a host of specialty markets, including the food preparation, pharmacy and jewelry industries. An ISO 9001:2008 manufacturer, OHAUS products are precise, reliable and affordable, and are backed by industry-leading customer support. For additional information, contact OHAUS Corporation at 1.973.377.9000, or visit www.ohaus.com.

OHAUS CORPORATION

*7 Campus Drive
Suite 310
Parsippany, NJ 07054 USA
Tel: 800.672.7722
973.377.9000
Fax: 973.944.7177

www.ohaus.com

*With offices throughout
Europe, Asia, and
Latin America*

***ISO 9001:2008**
Registered Quality
Management System

Ingeniously Practical